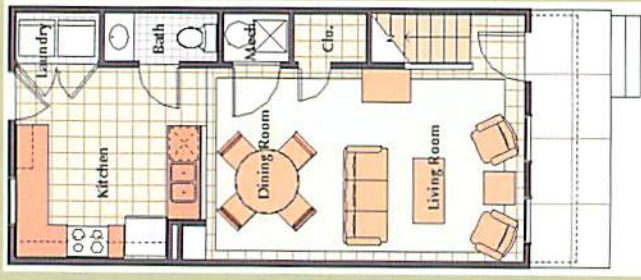
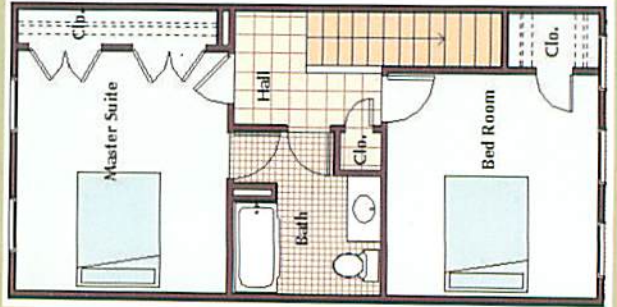


2 Bedroom Townhome
1072 SQUARE FEET

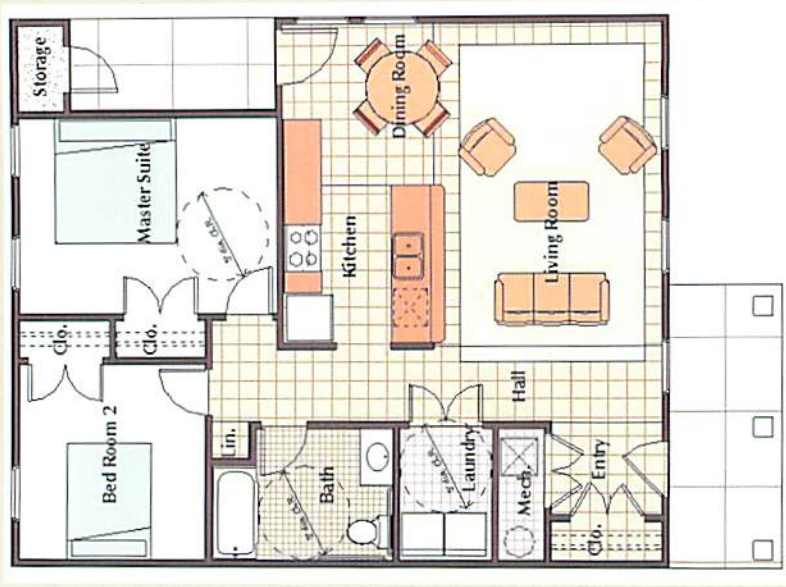


FIRST FLOOR

SECOND FLOOR

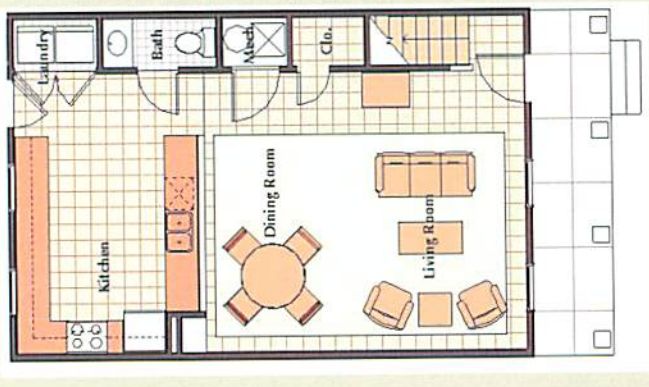


2 Bedroom Accessible
946 SQUARE FEET



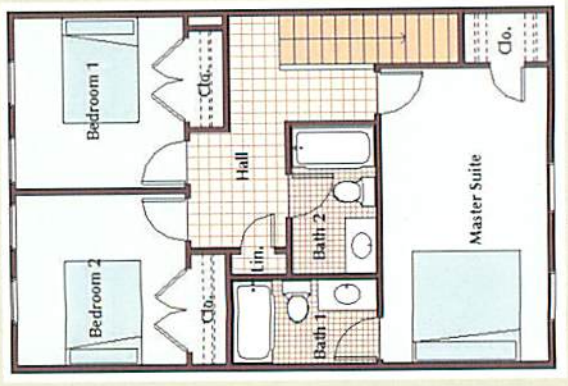
946 SQUARE FEET

3 Bedroom Townhome
1410 SQUARE FEET



FIRST FLOOR

SECOND FLOOR



3 Bedroom Accessible
1153 SQUARE FEET



1153 SQUARE FEET

Children's Play Area



FIVE MINUTES from:

- Downtown New Orleans
- French Quarter
- Central Business District

Within SHORT DISTANCE from:

- Audubon Zoo
- Aquarium of America
- Audubon Park
- City Park
- Chuck E Cheeses
- Mardi Gras Parades
- Riverwalk
- Shopping Malls

Directions to Leasing Office

From the Crescent City Connection, exit Earhart Blvd, make a U-turn under I-10, keep straight on Earhart Blvd, turn right on Simon Bolivar Ave for one block. The Leasing office is on the right.

FROM I-10 EAST, exit 234C (CLAIBORNE AVE), turn left on Martin Luther King Blvd., turn left on Simon Bolivar Ave., proceed straight for two blocks. The Leasing office is on the left.

guste1
ONE
apartments



1301 Simon Bolivar Ave. • New Orleans, LA 70113
(504) 529-3392 • (504) 529-6871 fax



AFFORDABLE LUXURY AT ITS FINEST

guste1
ONE
apartments

DEDICATED IN IMPROVING THE QUALITY OF LIFE



"Equal Housing Opportunity"



Apartment Amenities Include:*

- Central Air/Heat
- Luscious Landscape
- Furnished w/ appliances
- Emergency Maintenance Service
- Luxurious Flooring*
- Gourmet size kitchen
- Ceiling Fans Throughout
- Private Balcony*
- Spacious Closets
- Washer/Dryer Connections
- On-Site Professional Staff
- Off Street Parking
- Large Master Bedroom w/Master Bath*
- ADA accessibility*
- Guest Bath

*In Selected Apartments

guste1
ONE
apartments



This property has income and student restrictions as well as occupancy requirements. All applicants must pass the screening and suitability criteria. Rent is based upon income. Some other restrictions may apply.

